

SPECIFICATION

Arc 5 Pro

TELESCOPE	
Length	154mm
Objective Lens Diameter	Telescope: 45mm Distance Meter: 50mm
Magnification	30X
Image	Erect
Field of View	1°30'
Resolving Power	3"
Mini. Focus	1.0m
DISTANCE MEASUREMENT	
Single Prism	5000m ⁻¹
Non-Prism	1000m ⁻²
Accuracy	-Prism Mode ±(2mm+2ppm x D)m.s.e. ⁻³
	-Non-Prism Mode 0-500m: ±(3mm+2ppm x D)m.s.e. ⁻³
	500-1000m: ±(5mm+3ppm x D)m.s.e. ⁻³
Measuring Time	Fine: 1.0s, Tracking: 0.5s ⁻⁴
Meteorologic Correction	Manual Input, Auto Correction
Prism Constant	Manual Input, Auto Correction
On-side Shortcut	Trigger key to make measurement more easily
ANGLE MEASUREMENT	
Method	Absolute Encoding
Detecting System	H: 2 sides, V: 2 sides
Min. Reading	0.5"/1"/5"/10"
Accuracy	2"
Diameter of Circle	79mm
Vertical Angle 0°	Zenith 0°/Horizontal: 0°
Unit	360°/400gon/6400mil
DISPLAY	
Size	66mm X 42mm; 240*160 Dot Matrix
No. of Display	2
Keyboard	Alphanumeric Key
TILT CORRECTION	
Tilt Sensor	Dual Axis
Method	Liquid Electric
Range	±3'
Setting unit	1"
LEVEL SENSITIVITY	
Plate Level	30"/2mm
Circular Level	8'/2mm
OPTICAL PLUMMET (OPTIONAL: INTERNAL LASER PLUMMET)	
Image	Erect
Magnification	3X
Focusing Range	0.3m ~ ∞
Field of View	5°
DATA STORAGE & INTERFACE	
Storage	Internal Memory: 4MB; Max. Flashdrive USB supported
Data Interface	SD-card/RS232C
GENERAL	
Laser Class ⁻⁵ -EDM	Class IIIA
-Laser Plummet	Class II
Working Temperature	-20°C to +50°C
Battery Type	Rechargeable Lithium Battery
Battery Voltage	DC 7.4V
Working Time	8h
Water & Dust Proof	IP54

*1. Good condition: No haze, visibility about 40km, overcast, no scintillation.
 *2. With Kodak Gray Card white side (90% reflectivity).
 *3. D stands for distance.
 *4. Typically, under good condition, non-prism measuring time may differ according to measuring target, observation situations, and environmental conditions.
 *5. According to FDA21 CFR Ch.1 §.1040.

STANDARD PACKAGE COMPONENTS

- | | |
|--------------------|----------------------|
| Carrying Case X 1 | Screw Driver X 1 |
| Charger X 1 | Wiping Cloth X 1 |
| Battery X 2 | Lens Cover X 1 |
| Rain Cover X 1 | SD-Card X 1 |
| Mini USB Cable X 1 | Multi-port Cable X 1 |
| Carrying Belt X 2 | Warranty Card X 1 |
| Plumb X 1 | Reflecting Sheet X 1 |
| Adjusting Pin X 1 | User Manual X 1 |

OPTIONAL ACCESSORIES



SANDING
EVERY POINT MATTERS

TOTAL STATION

Arc 5 Pro

New 1000m Reflectorless EDM

Bluetooth+Flashdrive USB & Trigger Key



Dealer Info

SANDING
EVERY POINT MATTERS

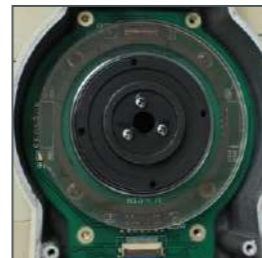
DISTANCE MEASUREMENT

1000m reflectorless measuring range covers a most common scale in your field job. With a single prism, you can reach up to 5km quickly with 2mm+2ppm accuracy.



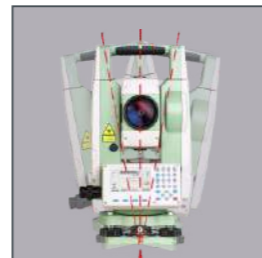
ANGLE MEASUREMENT

Arc 5 Pro adopts an absolute encoding system, which does not require initialization by 0 set, and delivers a precise and stable angle measurement with up to 2" accuracy.



TILT COMPENSATOR

The dual-axis tilt compensator monitors the inclination of both X and Y axes, and then correct the horizontal and vertical angle reading automatically.



DISPLAY & TRIGGER KEY

A high definition graphic display with 8 lines and 2 sides of alphanumeric keyboards provides clear images and convenient operation, A global key allows you take measure



DATA EXCHANGE

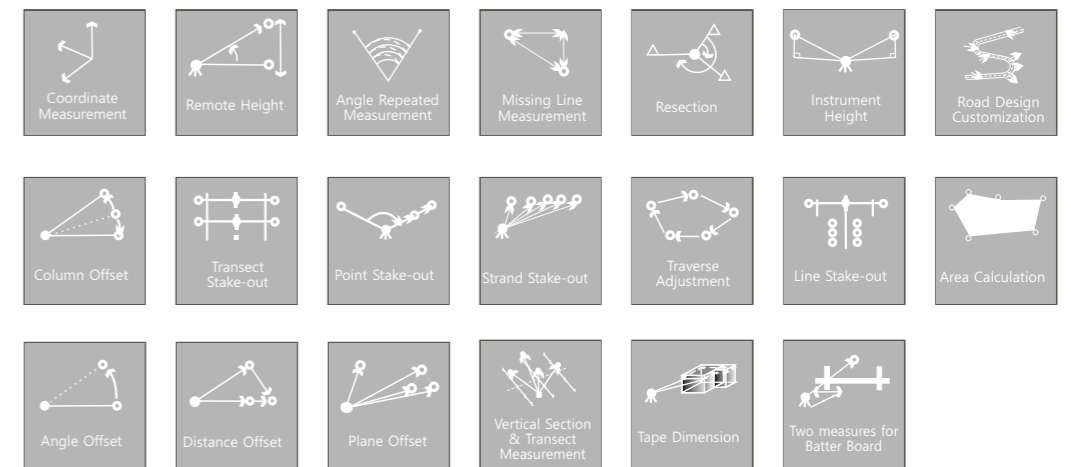
With flashdrive port, users can export/import data more easily and directly. New Arc5 pro support max.256G USB storage.



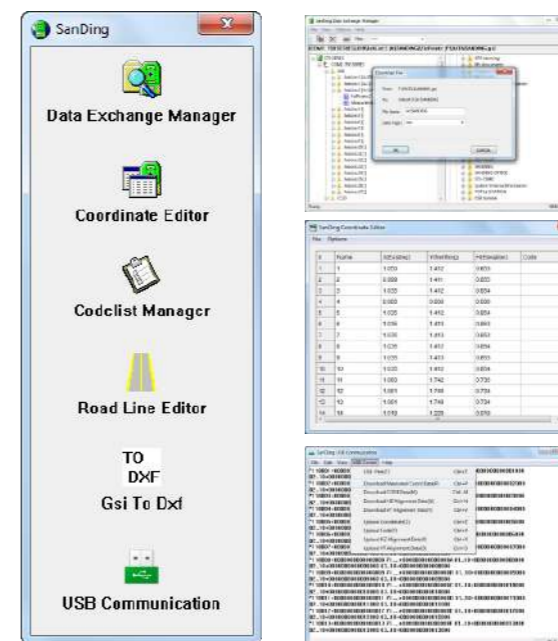
ON-BOARD SOFTWARE & APPLICATIONS

Arc 5 Pro series is powered by a sophisticated on-board software which enables you to manipulate the total station effectively, like setting the compensation, COGO, data viewing and transfer, calibration, etc.

What's more, the on-board software also provides various essential



SOFTWARE: SANDING PC TOOL



Powerful and convenient data transfer and post-processing software with concise and clear interface and user-friendly operation. User can download and upload raw data or coordinates in GSI format, edit coordinates and codes, design and edit road data, transfer GSI data to DXF file for processing in CAD, etc.