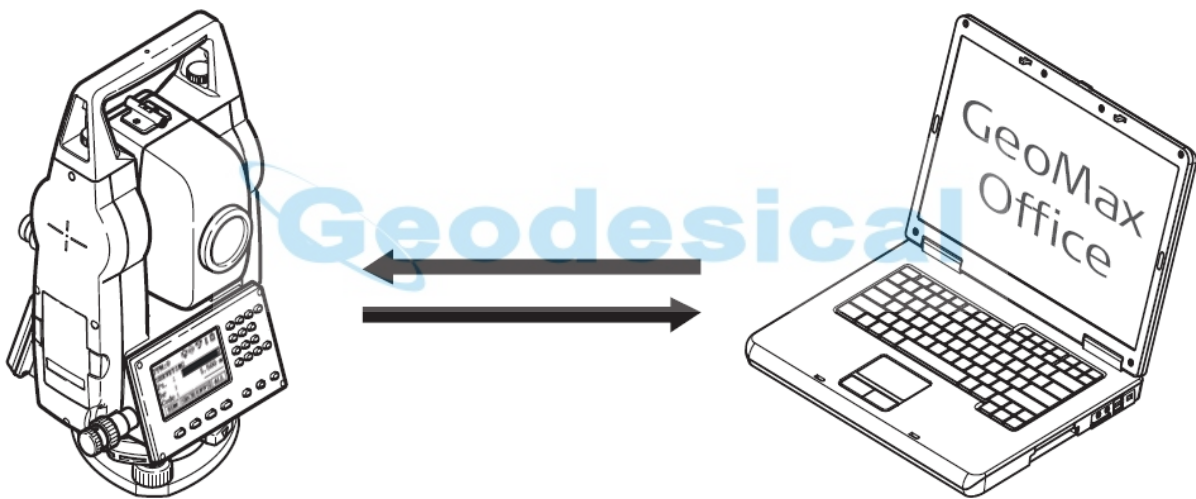


GeoMax Office Tools

User Guide



Version: 1.0
English

GeoMax Office Tools
User Guide

© 2011 GeoMax AG, Widnau, Switzerland

- 1 -

GE  **MAX**
Part of Hexagon Group

Tablet of Contents

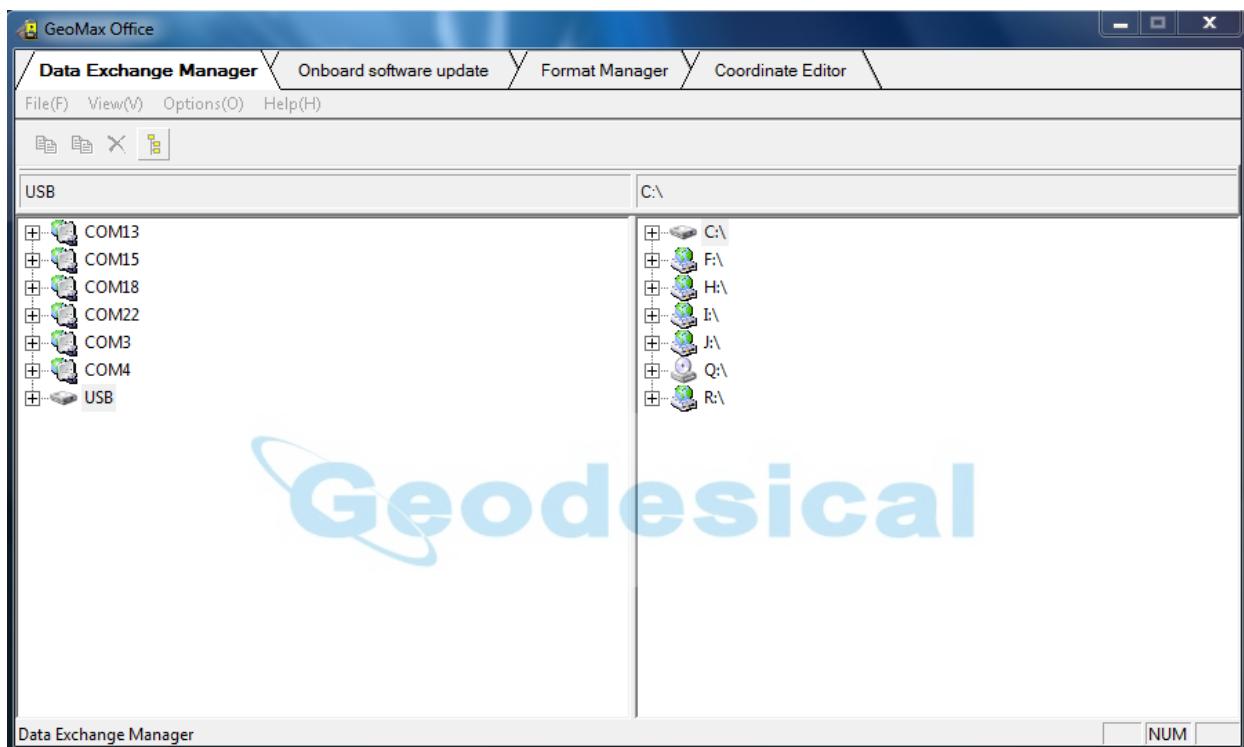
1	INTRODUCTION	3
2	DATA EXCHANGE MANAGER	4
3	ONBOARD SOFTWARE UPDATE	6
4	FORMAT MANAGER	6
5	COORDINATE EDITOR	7



1 INTRODUCTION

This guide provides complete step-by-step instructions for the various functions offered with the GeoMax Office Tools software. These functions include the Data Exchange Manager, Onboard software update and Coordinate Editor.

This software is suitable for use with the Zipp10 and ZT20 Series instruments. The latest version of the software is available from GeoMax Downloads, in the Zipp10 folder. Two installation files are available, one for Windows7 / Vista and the other for older versions of Windows.

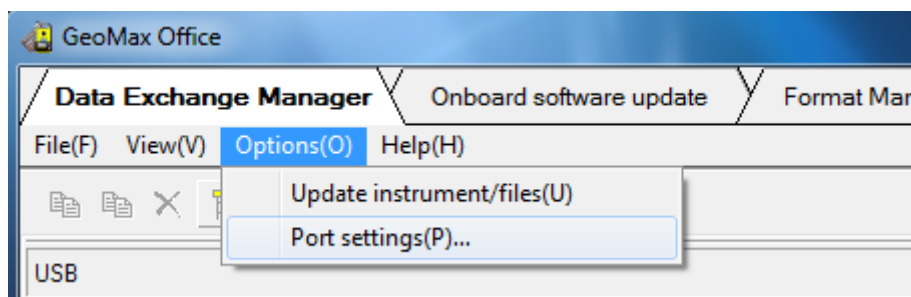


2 DATA EXCHANGE MANAGER

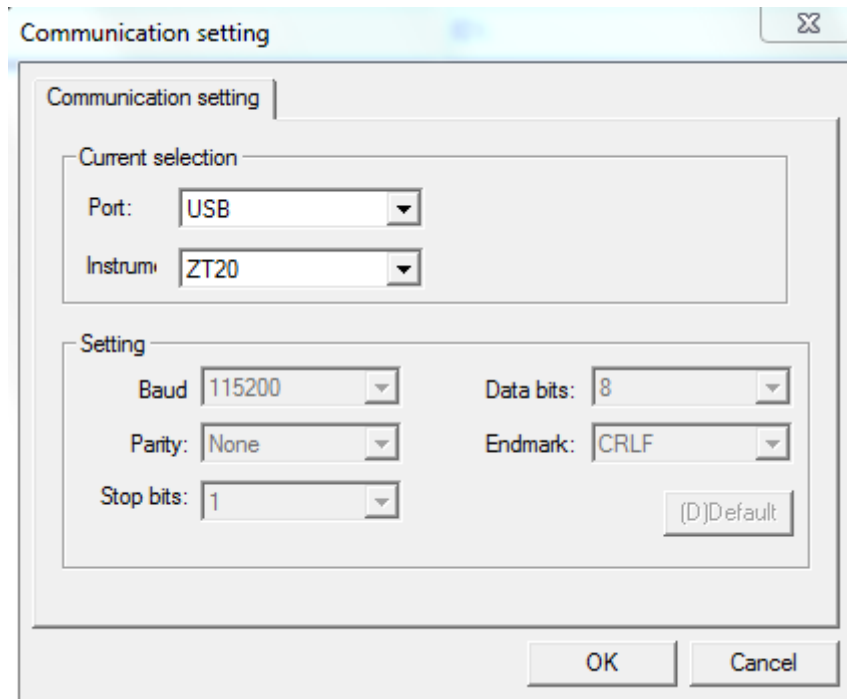
Connect the Zipp10 to the PC using the supplied ZDC301 USB cable and power it on. The Windows communication software should start automatically. For Windows7 or Vista, Windows Mobile Device Centre is used and for earlier versions of Windows, Microsoft ActiveSync. The required communication software is automatically installed together with GeoMax Office. If the software does not start automatically, it can be run by selecting it from the Windows Start Menu.



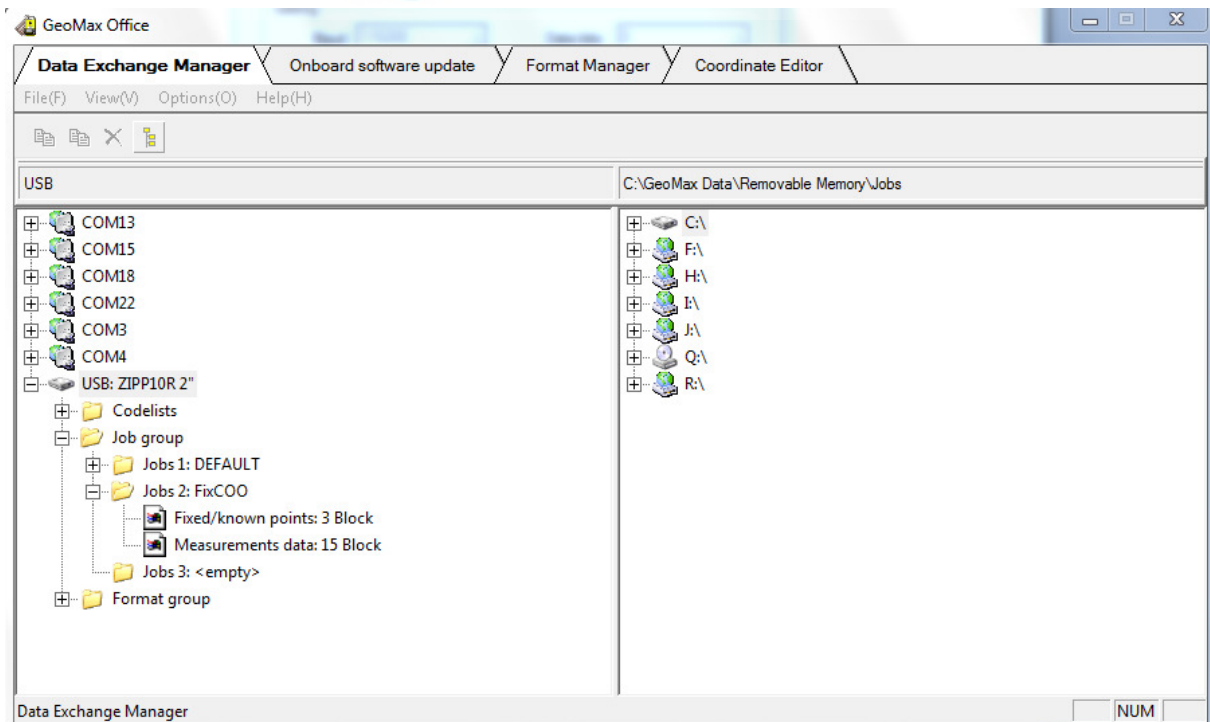
Select *Connect without setting up your device*. Now run Geomax Office by selecting the appropriate icon from the Windows Desktop. Activate the **Data Exchange Manager** tab.



From the menu, select *Options>Port settings*, to open the Communication Settings window. Set the Port to *USB* and instrument to *Zipp10/ZT20*.

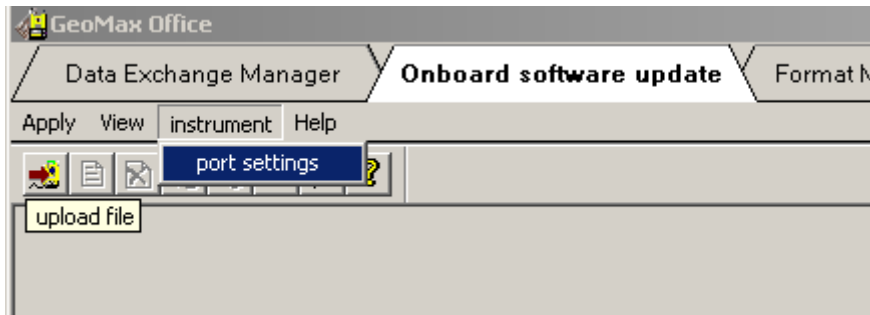


Then synchronise with the instrument by selecting *Options>Update instrument/files*. Open the required Job directory. Files can be up- and downloaded by drag and drop.

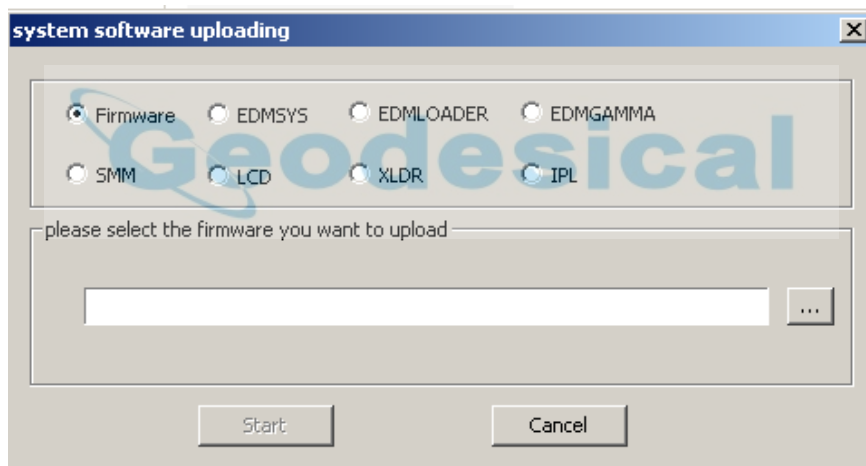


3 ONBOARD SOFTWARE UPDATE

Connect the instrument with the PC as described in **2 Data Exchange Manager**. Activate the **Onboard software update** tab. From the menu, select *instrument>port settings*, to open the Communication Settings window. Set the Port to USB and instrument to *Zipp10/ZT20*.



Select the *upload file* icon from the menu bar to open the System Software Uploading window. Select *Firmware* and browse to the firmware file. Select *Start* to begin the upload.



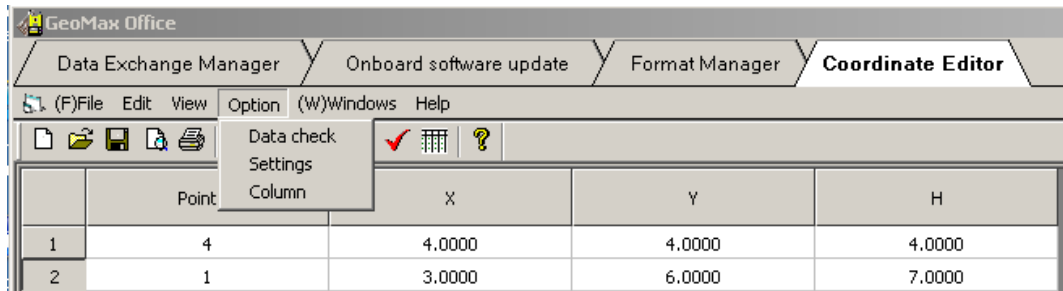
If the EDM firmware has to be loaded then select *EDMSYS* and browse to the EDM firmware file.

4 FORMAT MANAGER

Currently format files are not supported by *Zipp10/ZT20*.

5 COORDINATE EDITOR

Coordinate Editor is used to edit downloaded coordinate files or to create a new coordinate file. Activate the **Coordinate Editor** tab.



Select *File*>*New* or *Open* (to edit an existing file). Enter coordinates. Select *Option*>*Settings* to change the unit and precision. Select *Options*>*Column* to select which column should be displayed. To insert or delete a line select *Edit* from the menu. Save the data in GSI format.



GeoMax AG
Espanstrasse 135
CH-9443 Widnau
Switzerland