

Motic®

MORE THAN MICROSCOPY



EDUCATION **L I N E**



Canada
China
Germany
Spain
USA



Motic was established in 1988 as a hi-tech industrial enterprise specialized in manufacturing conventional compound microscopes. Owned by Speed Fair Co., Ltd, the company has grown into a global brand with sales offices in Canada, Germany, Hong Kong, Spain and the United States.

Our manufacturing base in China consists of four wholly-owned factories with **Motic Xiamen** acting as the production and design headquarters of the company. Xiamen's Research and Development centre has over 100 professional engineers and technicians covering optical, mechanical, industrial, electronic and software design.

Today, **Motic's** dedicated team members of more than 2000 individuals are ready to assist you in finding competitive solutions.



MOTIC Aim for the FUTURE

During the late 1990s, the company started to explore and develop affordable digital microscopy solutions consisting of imaging hardware and application software. This has proven to be a worthwhile investment turning **Motic** into one of the leading brand names of digital microscopy products.

The main goal of **Motic** remains the same today as it was when the company was founded. The brand **Motic** stands for

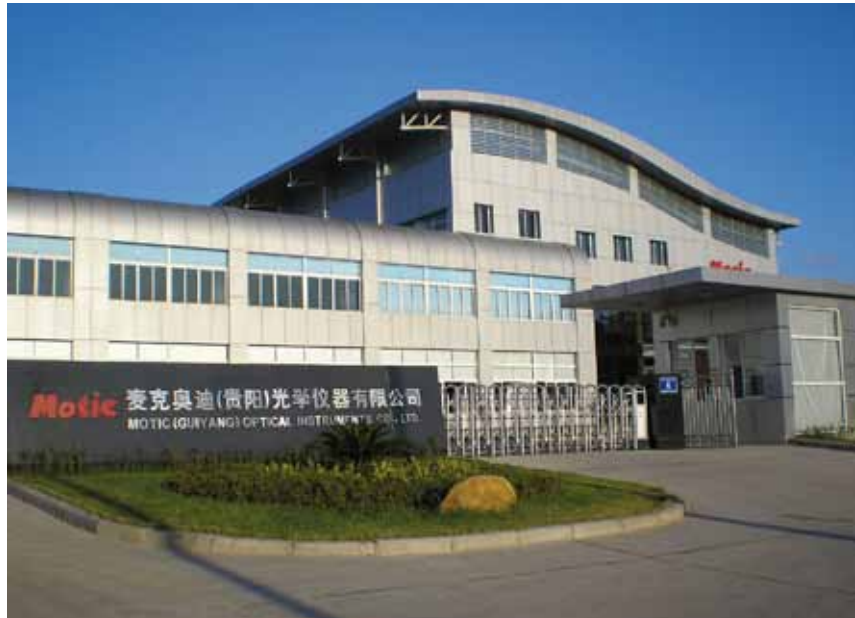
Excellent Price-Performance

Innovative Technology

Superb Quality

Friendly Customer Service

Motic is a certified **ISO9001**, **ISO14001** and **ISO13485** company.



Your Motic Team

Introduction

Motic's complete range of Educational Compound and Stereo microscopes are designed to cover the needs of educators as well as hobbyists. The Education Line is sold exclusively through authorized Motic distributors.

Our extensive range of digital Moticam solutions are easily added onto a Educational Series microscope. For more information, please consult our Digital Education Moticam Selection Catalogue.

The brand **Motic** assures that you are purchasing a quality instrument that has been thoroughly inspected and adjusted by our trained technicians and backed by the company's dedication to your complete satisfaction. Our **5-Year Limited Warranty** is supported by a complete parts inventory that assures availability even beyond the warranty period. We are aware that the selection of a microscope of any type requires careful consideration of several factors and not only the price. A **Motic** microscope is therefore a solid investment, that will pay off with years of hassle-free and quality work.

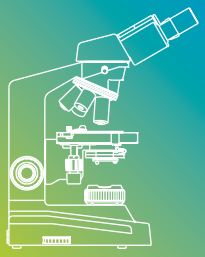


Motic warrants all microscopes to be free from defects in material and workmanship under normal use and service for 5 years from date of purchase. For electrical and electronic parts 2 years from date of purchase. It does not cover damage resulting from abuse or misuse, repairs or alterations performed by others than authorized repair technicians of Motic or damage occurring in transit. Any modification, even only parts of the instrument or Serial N°, will automatically cancel this warranty. Warranty does not cover bulbs and fuses.



Contents

Series	Page
F11 LED Basic Biological Microscope Series	06
18/28 LED Biological Microscope Series	08
PM Petrographic Microscope Series	12
B1 Advanced Biological Microscope Series	14
B3 Professional Biological Microscope Series	16
Accessories (F11 LED, 18/28 LED, PM, B1 and B3)	18
ST-39 Stereo Microscope Series	20
SFC-11 Stereo Microscope Series	21
SMZ-140/143 Stereozoom Microscope Series	22
Accessories (ST-39, SFC-11, SMZ-140/143)	23



F11 LED

Basic Biological Microscope Series

This microscope Series sets the standard for **high school instruction**. Each model includes the most requested microscope characteristics such as rugged metal construction, metal focusing gears and student-proof locked on components. The superior **DIN optical system** and precision manufacturing assures that all microscopes are parcentric as well as parfocal and deliver bright and sharp images. This series also includes a model with an extra vertical eyepiece tube so that a sample can be viewed by two persons at the same time.

GOINGgreen



F11 LED

Basic Biological Microscope Series



Model F1110 Corded LED

- 45° Inclined Monocular head for comfortable viewing while seated, rotates 360°
- Widefield eyepiece 10X/18mm with built-in pointer
- Revolving quadruple nosepiece with positive click-stops for precise magnification changes
- DIN Achromatic objectives parfocal and parcentric 4X/0.10, 10X/0.25 and 40X/0.65 with spring
- Separate coarse and fine focusing adjustment with upper-limit stop to prevent damage to slides and objectives
- Large 120mm x 110mm stage with locked-on, spring stage clips
- Special built-in 0.65NA condenser with iris diaphragm
- LED illumination with intensity adjustment



Model F1115 Corded LED

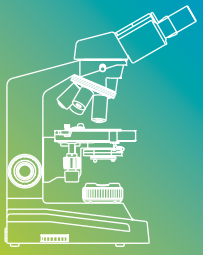
- 45° Inclined Monocular head for comfortable viewing while seated, rotates 360°
- Widefield eyepiece 10X/18mm with built-in pointer
- Revolving quadruple nosepiece with positive click-stops for precise magnification changes
- DIN Achromatic objectives parfocal and parcentric 4X/0.10, 10X/0.25 and 40X/0.65 with spring
- Separate coarse and fine focusing adjustment with upper-limit stop to prevent damage to slides and objectives
- Large 120mm x 110mm stage with locked-on, spring stage clips
- Focusable 1.25NA Abbe Condenser with iris diaphragm
- LED illumination with intensity adjustment



Model F1125 Corded LED

- 30° Inclined Monocular head with a second viewing tube, rotates 360°
- Widefield eyepiece 10X/18mm with built-in pointer for forward facing eyepiece
- Revolving quadruple nosepiece with positive click-stops for precise magnification changes
- DIN Achromatic objectives parfocal and parcentric 4X/0.10, 10X/0.25 and 40X/0.65 with spring
- Separate coarse and fine focusing adjustment with upper-limit stop to prevent damage to slides and objectives
- Large 120mm x 110mm stage with locked-on, spring stage clips
- Focusable 1.25NA Abbe Condenser with iris diaphragm
- LED illumination with intensity adjustment



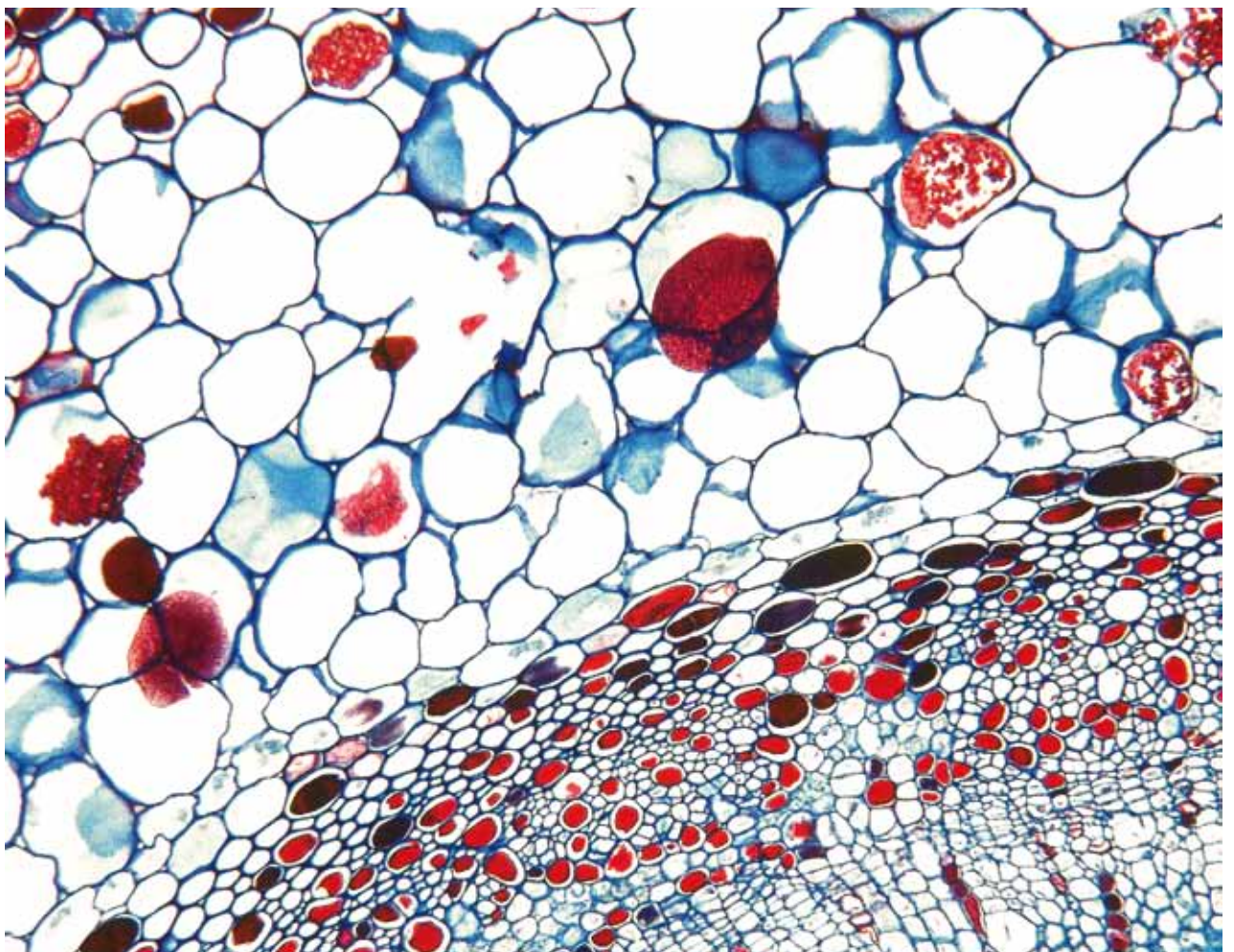


18 / 28 LED

Biological Microscope Series

Motic's **LED system** offers bright white illumination with no heat. By using a rechargeable battery pack, this illumination system can also be used cordless. Whether your science lab is outdoors, lacks electrical outlets or you simply prefer a tangle-free work environment, our **LED microscopes** offer a wide range of possibilities.

The 18 and 28 LED Series utilize a rugged platform and contain only high quality components. The **LED** system is rated for 10,000 hours of life, longer than any other type of illumination. A single charge of 8 hours allows up to 50 hours of continuous use. Aside from the fact that the **LED** system produces virtually no heat, it also operates under low-voltage, making it ideal for the school environment. All microscopes include a users manual, battery charger and vinyl dust cover.



18/28 LED

Biological Microscope Series



Model 1801 LED

- 45° Inclined Monocular head for comfortable viewing while seated, rotates 360°
- Widefield eyepiece 10X/18mm with built-in pointer
- Reverse mounted, quadruple nosepiece with positive click-stops for precise magnification changes
- EA Achromatic objectives parfocal and parcentric 4X/0.10, 10X/0.25 and 40X/0.65 with spring
- Separate coarse and fine focusing adjustment with upper-limit stop to prevent damage to slides and objectives
- Focus tension adjustment prevents stage-drift
- Large 120mm x 125mm stage with locked-on, spring stage clips
- Special built-in 0.65NA condenser with iris diaphragm
- Rechargeable LED illumination with intensity adjustment



Model 1802 LED

- 45° Inclined Monocular head for comfortable viewing while seated, rotates 360°
- Widefield eyepiece 10X/18mm with built-in pointer
- Reverse mounted, quadruple nosepiece with positive click-stops for precise magnification changes
- EA Achromatic objectives parfocal and parcentric 4X/0.10, 10X/0.25 and 40X/0.65 with spring
- Separate coarse and fine focusing adjustment with upper-limit stop to prevent damage to slides and objectives
- Focus tension adjustment prevents stage-drift
- Large 133mm x 136mm mechanical stage with low-position coaxial controls
- Spiral mounted 1.25NA Abbe condenser with iris diaphragm
- Rechargeable LED illumination with intensity adjustment



Model 1820 LED

- 45° Inclined Binocular head with diopter adjustment, rotates 360°
- Widefield eyepieces 10X/18mm
- Reverse mounted, quadruple nosepiece with positive click-stops for precise magnification changes
- EA Achromatic objectives parfocal and parcentric 4X/0.10, 10X/0.25 and 40X/0.65 with spring
- Separate coarse and fine focusing adjustment with upper-limit stop to prevent damage to slides and objectives
- Focus tension adjustment prevents stage-drift
- Large 133mm x 136mm mechanical stage with low-position coaxial controls
- Spiral mounted 1.25NA Abbe condenser with iris diaphragm
- Rechargeable LED illumination with intensity adjustment



18/28 LED

Biological Microscope Series



Model 2801 LED

- 45° Inclined Monocular head for comfortable viewing while seated, rotates 360°
- Widefield eyepiece 10X/18mm with built-in pointer
- Reverse mounted, quadruple nosepiece with positive click-stops for precise magnification changes
- EA Achromatic objectives parfocal and parcentric 4X/0.10, 10X/0.25 and 40X/0.65 with spring
- Coaxial coarse and fine focusing adjustment with upper-limit stop to prevent damage to slides and objectives
- Large 120mm x 125mm stage with locked-on, spring stage clips
- Special built-in 0.65NA condenser with iris diaphragm
- Rechargeable LED illumination with intensity adjustment



Model 2802 LED

- 45° Inclined Monocular head with diopter adjustment, rotates 360°
- Widefield eyepieces 10X/18mm
- Reverse mounted, quadruple nosepiece with positive click-stops for precise magnification changes
- EA Achromatic objectives parfocal and parcentric 4X/0.10, 10X/0.25 and 40X/0.65 with spring
- Coaxial coarse and fine focusing adjustment with upper-limit stop to prevent damage to slides and objectives
- Large 133mm x 136mm mechanical stage with low-position coaxial controls
- Spiral mounted 1.25NA Abbe condenser with iris diaphragm
- Rechargeable LED illumination with intensity adjustment



Model 2820 LED

- 45° Inclined Binocular head with diopter adjustment, rotates 360°
- Widefield eyepieces 10X/18mm
- Reverse mounted, quadruple nosepiece with positive click-stops for precise magnification changes
- EA Achromatic objectives parfocal and parcentric 4X/0.10, 10X/0.25 and 40X/0.65 with spring
- Coaxial coarse and fine focusing adjustment with upper-limit stop to prevent damage to slides and objectives
- Large 133mm x 136mm mechanical stage with low-position coaxial controls
- Spiral mounted 1.25NA Abbe condenser with iris diaphragm
- Rechargeable LED illumination with intensity adjustment



NEW!

2823LED

TRINOCULAR HEAD

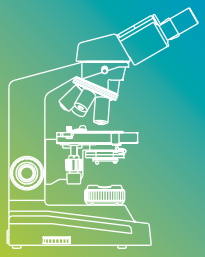
- 45° Inclined Trinocular head with diopter adjustment, rotates 360°
- 50/50 Light Split
- Widefield eyepieces 10X/18mm
- Reverse mounted, quadruple nosepiece with positive click-stops for precise magnification changes
- EA Achromatic objectives parfocal and parcentric 4X/0.10, 10X/0.25 and 40X/0.65 with spring
- Coaxial coarse and fine focusing adjustment with upper-limit stop to prevent damage to slides and objectives
- Focus tension adjustment prevents stage-drift
- Large 133mm x 136mm mechanical stage with low-position coaxial controls
- Spiral mounted 1.25NA Abbe condenser with iris diaphragm
- Rechargeable LED illumination with intensity adjustment



HIGH ▲
QUALITY
LOW ▼
BUDGET

TRINOCULAR
MICROSCOPE





PM

Petrographic Microscope Series

This highly engineered polarizing microscope utilizes superb mechanics, a rugged platform and it is offered at a cost far from similar models in this category. **Motic's petrographic microscope** can be used as a standard bright field or as a polarizing microscope for **investigations in geology or mineralogy**. The **PM series** contains two different models; the **PM-1805** with swing in/out analyzer & polarizer and the **PM-2805** with $1/4\lambda$ plate, full λ plate, Bertrand lens and a coaxial focusing adjustment.

Model PM-1805

- 45° Inclined Monocular head for comfortable viewing while seated, rotates 360°
- Widefield eyepiece 10X/18mm with plain cross-hair
- Reverse mounted, quadruple nosepiece with positive click-stops for precise magnification changes
- EA Achromatic objectives parfocal and parcentric 4X/0.10, 10X/0.25 and 40X/0.65 with spring
- Separate coarse and fine focusing adjustment with upper-limit stop to prevent damage to slides and objectives
- Focus tension adjustment prevents stage-drift
- 130mm diameter, 360° rotatable stage with a graduation to 1° with stage clips
- Focusable 1.25NA Abbe Condenser with iris diaphragm and filter holder
- Includes a swing in/out analyzer and polarizer
- 12V/20W Halogen Illumination with intensity adjustment



Model PM-2805

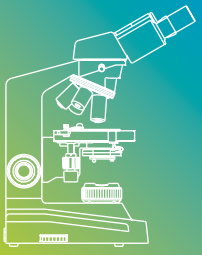
- 45° Inclined Monocular head for comfortable viewing while seated, rotates 360°
- Widefield eyepiece 10X/18mm with plain cross-hair
- Reverse mounted, quadruple nosepiece with positive click-stops for precise magnification changes
- EA Achromatic objectives parfocal and parcentric 4X/0.10, 10X/0.25 and 40X/0.65 with spring
- Coaxial coarse and fine focusing adjustment with upper-limit stop to prevent damage to slides and objectives
- 130mm diameter, 360° rotatable stage with a graduation to 1° with stage clips
- Focusable 1.25NA Abbe Condenser with iris diaphragm and filter holder
- The analyzing slider is equipped with $1/4\lambda$ plate and full λ plate. The intermediate tube also contains a Bertrand lens. The polarizer is mounted directly into the field lens.
- 12V/20W Halogen Illumination with intensity adjustment



PM-2805

BEST SELLER





B1

Advanced Biological Microscope Series

Superior in design and in performance, the **B1 Series** incorporates a wide range of features designed for university and laboratory use. Superb optical clarity and reliable mechanical engineering assures years of top performance. Choose from two grades of objectives: **Standard Achromatic** lenses deliver excellent clarity and normal flatness of field, while the **ASC Achromatic Super Contrast objectives** deliver extra contrast to the image. Combined with precision coaxial coarse and fine focusing adjustments, the **B1** models are exceptionally high quality microscopes available within a tight budget.

Model B1-211 A

Model B1-220 A

Model B1-223 A

- 45° Inclined Monocular (B1-211A) and Binocular (B1-220A) or 30° inclined Trinocular (B1-223A) head, rotates 360°
- Widefield eyepieces 10X/18mm
- Revolving quadruple nosepiece for smooth changes in magnification
- Parfocal and Parcentric DIN Plan Achromatic objective, 4X/0.10; DIN Achromatic objectives 10X/0.25, 40X/0.65 – Spring, 100X/1.25 – Spring/Oil.
- Coaxial coarse and fine focusing adjustment in 2 micron increments with upper limit stop to prevent damage to slide or objective
- Vertical travel range 27mm
- Tension adjustment to prevent stage drift
- Large 140mm x 135mm mechanical stage with low-position coaxial controls. Travel range 78 x 50mm
- Rack & Pinion mounted 1.25NA Abbe Condenser with iris diaphragm and filter holder
- 12V/20W Halogen illumination with intensity adjustment.

BEST SELLER



B1-220A

B1

Advanced Biological Microscope Series

Achromatic
Super
Contrast
objectives

ASC
extra contrast
to the image

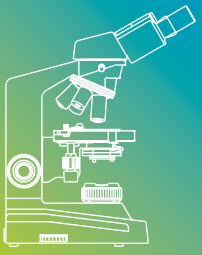
Model B1-220 ASC

Model B1-223 ASC

- 45° Inclined Binocular (B1-220ASC) or 30° inclined Trinocular (B1-223ASC) head, rotates 360°
- Widefield eyepieces 10X/20mm
- Revolving quadruple nosepiece for smooth changes in magnification
- Achromatic Super Contrast objectives, parfocal and parcentric 4X/0.10, 10X/0.25, 40X/0.65 – Spring, 100X/1.25 – Spring/Oil
- Coaxial coarse and fine focusing adjustment in 2 micron increments with upper limit stop to prevent damage to slide or objective
- Vertical travel range 27mm
- Tension adjustment to prevent stage drift
- Large 140mm x 135mm mechanical stage with low-position coaxial controls. Travel range 78 x 50mm
- Rack & Pinion mounted 1.25NA Abbe Condenser with iris diaphragm and filter holder
- 12V/20W Halogen illumination with intensity adjustment.



B1-220ASC



B3

Professional Biological Microscope Series

As a natural progression of the popular B1 series, the **more advanced B3 series** offers features for the more demanding user. A standard **Siedentopf** head configuration allows for interpupillary distance adjustment without the need for refocusing. The superior **Koehler Illumination system** offers ample illumination, making this series ideal for Lab work. Combined with either **ASC Achromatic Super Contrast** or **Plan Achromatic objectives**, this series have an unbeatable price-quality ratio.

Model B3-220 ASC

Model B3-223 ASC

- 30° Inclined Binocular (B3-220ASC) or Trinocular (B3-223ASC) Siedentopf head, rotates 360°
- Widefield eyepieces 10X/20mm with diopter adjustment on the left eyetube
- Revolving quintuple reverse-mounted nosepiece for smooth changes in magnification
- Parfocal and Parcentric Objectives Achromatic Super Contrast 4X/0.10, 10X/0.25, 40X/0.65 – Spring, 100X/1.25 – Spring/Oil
- Coaxial coarse and fine focusing adjustment in 2 micron increments with upper limit stop to prevent damage to slide or objective
- Vertical travel range 27mm
- Tension adjustment to prevent stage drift
- Large 140mm x 135mm mechanical stage with low-position coaxial controls. Travel range 78 x 50mm
- Rack & Pinion mounted 1.25NA Abbe Condenser with iris diaphragm and filter holder
- 12V/20W Halogen Koehler illumination with intensity adjustment



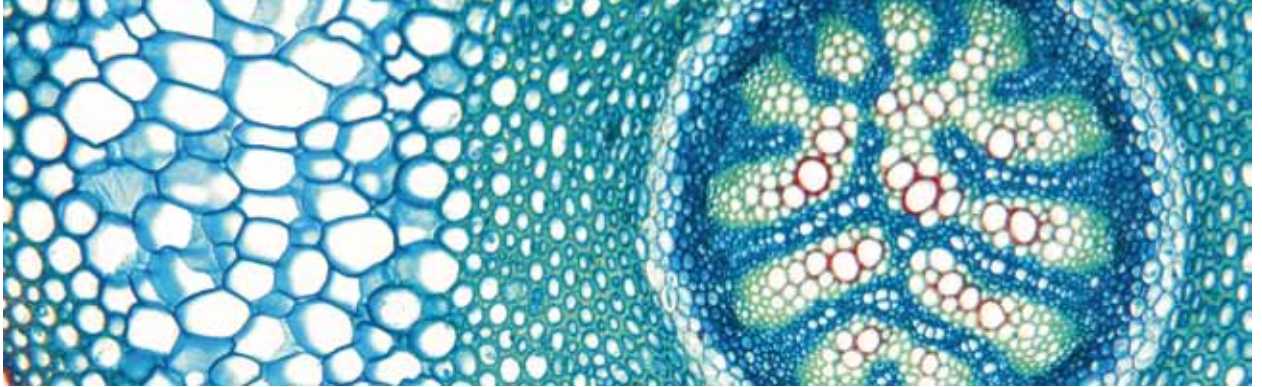
B3-220ASC



B3-223ASC

B3

Professional Biological Microscope Series



Model B3-220 PL

Model B3-223 PL

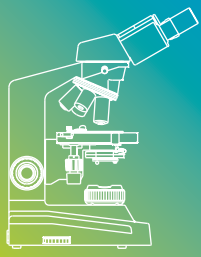
- 30° Inclined Binocular (B3-220PL) or Trinocular (B3-223PL) Siedentopf head, rotates 360°
- Widefield eyepieces 10X/20mm with diopter adjustment on the left eyetube
- Revolving quintuple reverse-mounted nosepiece for smooth changes in magnification
- Parfocal and Parcentric Objectives Plan Achromatic 4X/0.10, 10X/0.25, 40X/0.65 – Spring, 100X/1.25 – Spring/Oil
- Coaxial coarse and fine focusing adjustment in 2 micron increments with upper limit stop to prevent damage to slide or objective
- Vertical travel range 27mm
- Tension adjustment to prevent stage drift
- Large 140mm x 135mm mechanical stage with low-position coaxial controls. Travel range 78 x 50mm
- Rack & Pinion mounted 1.25NA Abbe Condenser with iris diaphragm and filter holder
- 12V/20W Halogen Koehler illumination with intensity adjustment



B3-220PL



B3-223PL



Accessories

F11 LED

Eyepieces

Huygens eyepiece H5X / 14.5 mm
Widefield eyepiece WF10X / 18 mm
Widefield eyepiece WF15X / 12 mm
Huygens eyepiece H15X / 8 mm
Widefield eyepiece WF20X / 11 mm

Micrometer eyepieces

Micrometer eyepiece WF10X / 18mm,
100 divisions in 10 mm
Reticle 19 mm (for 18 mm eyepiece),
100 divisions in 10 mm
Reticle holder

Acromatic objectives

Achromatic objective 4X / 0.10
Achromatic objective 10X / 0.25
Achromatic objective 20X / 0.40
Achromatic objective 40X / 0.65 / S
Achromatic objective 60X / 0.85 / S
Achromatic objective 100X / 1.25 / S-oil

Photo and CCD adapters

Photo adapter
CCD adapter

Spare parts

Mechanical stage MSH-009
Dust cover (size B)
Plastic carrying case
Aluminium box

Spare bulbs

LED 20mA, 3,5V, 70mW

18/28 LED

Eyepieces

Huygens eyepiece H5X / 14.5 mm
Widefield eyepiece WF10X / 18 mm
Widefield eyepiece WF15X / 12 mm
Huygens eyepiece H15X / 8 mm

Micrometer eyepieces

Micrometer eyepiece WF10X / 18mm,
100 divisions in 10 mm
Reticle 19 mm (for 18 mm eyepiece),
100 divisions in 10 mm
Reticle holder

Acromatic objectives

Achromatic objective 4X / 0.10
Achromatic objective 10X / 0.25
Achromatic objective 20X / 0.40
Achromatic objective 40X / 0.65 / S
Achromatic objective 60X / 0.85 / S
Achromatic objective 100X / 1.25 / S-oil

Polarizing accessories

Polarizing set for 18/28 LED NT
Rotating table for
1802/1820/2802/2820/2823

C-mount camera adapters

0.5X C-mount camera adapter
Trinocular eyepiece adapter
(eyepiece included)

Spare parts

Dust cover (size B)
Aluminium box

Spare bulbs

LED 20mA, 3,5V, 70mW

PM

Eyepieces

Huygens eyepiece H5X / 14.5 mm
Widefield eyepiece WF10X / 18 mm
Widefield eyepiece WF15X / 12 mm
Huygens eyepiece H15X / 8 mm

Micrometer eyepieces

Micrometer eyepiece WF10X / 18mm,
100 divisions in 10 mm
Widefield eyepiece WF10X / 18 mm (cross reticle)
Reticle 19 mm (for 18 mm eyepiece),
100 divisions in 10 mm
Cross reticle 19 mm (for 18 mm eyepiece)
Reticle holder

Acromatic objectives

Achromatic objective 4X / 0.10
Achromatic objective 10X / 0.25
Achromatic objective 20X / 0.40
Achromatic objective 40X / 0.65 / S
Achromatic objective 60X / 0.85 / S

Spare parts

Blue filter
Dust cover (size B)
Aluminium box

Spare bulbs

Halogen bulb 12V / 20W

B1

Eyepieces

Huygens eyepiece H5X / 14.5 mm
Widefield eyepiece WF10X / 18 mm
Widefield eyepiece WF15X / 12 mm
Widefield eyepiece WF20X / 11 mm

Micrometer eyepieces

Micrometer eyepiece WF10X / 18mm,
100 divisions in 10 mm
Reticle 19 mm (for 18 mm eyepiece),
100 divisions in 10 mm
Reticle holder

Achromatic objectives A

Achromatic objective 4X / 0.10
Achromatic objective 10X / 0.25
Achromatic objective 20X / 0.40
Achromatic objective 40X / 0.65 / S
Achromatic objective 60X / 0.85 / S
Achromatic objective 100X / 1.25 / S-Oil

Achromatic super contrast objectives (ASC)

Achromatic Super Contrast Objective ASC 4X / 0.10
Achromatic Super Contrast Objective ASC 10X / 0.25
Achromatic Super Contrast Objective ASC 40X / 0.65 / S
Achromatic Super Contrast Objective ASC 100X / 1.25 / S-Oil

Plan phase objective - PL PH

Plan Phase objective PL PH 10X / 0.25
Plan Phase objective PL PH 40X / 0.65 / S

Phase contrast and darkfield accessories

10X phase contrast attachment (simple plug in type)
40X phase contrast attachment (simple plug in type)
Centering telescope
Darkfield attachment (simple plug in type)

Polarizing accessories

Polarizing Set B.208
Polarizing Set B. 208NT (without rotating table)

Photo and C-mount camera adapters

2.5X SLR Projection Lens
4X SLR Projection Lens
0.5X C-mount camera adapter for 1/3" chip sensors
0.6X C-mount camera adapter for 1/2" chip sensors
1X C-mount camera adapter (no lens)

Spare parts

Blue filter
Green filter
Yellow filter
Eyecups (pair)
Dust cover (size C)
Mirror and fork attachment
Aluminium box

Spare bulbs

Halogen bulb 12V / 20W

B3

Eyepieces

Huygens eyepiece H5X / 14.5 mm
Widefield eyepiece WF10X / 20 mm
Widefield eyepiece WF15X / 12 mm
Widefield eyepiece WF20X / 11 mm

Micrometer eyepieces

Micrometer eyepiece 10X / 20mm,
100 divisions in 10 mm
Reticle (for 20 mm eyepiece),
100 divisions in 10 mm
Reticle holder

Achromatic super contrast objectives (ASC)

Achromatic Super Contrast Objective ASC 4X / 0.10
Achromatic Super Contrast Objective ASC 10X / 0.25
Achromatic Super Contrast Objective ASC 40X / 0.65 / S
Achromatic Super Contrast Objective ASC 100X / 1.25 / S-Oil

Plan objectives - PL

Plan objective PL 4X / 0.10
Plan objective PL 10X / 0.25
Plan objective PL 20X / 0.40
Plan objective PL 40X / 0.65 / S
Plan objective PL 60X / 0.85 / S
Plan objective PL 100X / 1.25 / S-Oil

Plan phase objective - PL PH

Plan Phase objective PL PH 10X / 0.25
Plan Phase objective PL PH 20X / 0.40
Plan Phase objective PL PH 40X / 0.65 / S
Plan Phase objective PL PH 100X / 1.25 / S-Oil

Phase contrast and darkfield accessories

10X phase contrast attachment (simple plug in type)
40X phase contrast attachment (simple plug in type)
Centering telescope
Special 5-hole turret type Abbe condenser 1.25 N.A.
with choices for phase contrast 10X, 20X, 40X, 100X
and brightfield
Complete phase contrast set including:
plan objectives PL PH 10X, 20X, 40X S and 100X-S / Oil,
turret type Abbe condenser 1.25 N.A. and centering telescope.
Darkfield attachment (simple plug in type)

Polarizing accessories

Polarizing Set B.209

Photo and C-mount camera adapters

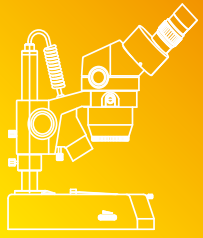
2.5X SLR Projection Lens
4X SLR Projection Lens
0.5X C-mount camera adapter for 1/3" chip sensors
0.6X C-mount camera adapter for 1/2" chip sensors

Spare parts

Blue filter (ø 45mm)
Green filter (ø 45mm)
Yellow filter (ø 45mm)
Frosted filter (ø 45mm)
Eyecups (pair)
Dust cover (size C)
Aluminium box

Spare bulbs

Halogen bulb 12V / 20W



ST39

Stereo Microscope Series

This uniquely **Motic**-shaped stereo microscope series contains two different models with different optical systems. The **ST-39C-N9GO** uses a rotating turret objective with **2X/4X** magnifications, while the **ST-39Z-N9GO** has a zoom objective with a ratio of **1:3**, which allows students to view anything from 10X to a close-up 30X magnification. The achromatic optical system provides sharp and parfocal images throughout the zoom range, without having to refocus.

ST-39C N9GO

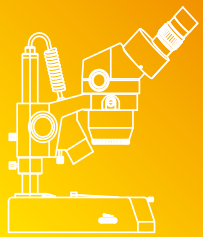
- 45° Inclined Binocular head, rotates 360°, with interpupillary adjustment
- Widefield eyepieces 10X/20mm with diopter adjustment on the left eyetube
- Turret magnification changer 2X/4X
- Objectives are parfocal and parcentric. Magnification is changed by rotating the turret by 90° to the positive click stop
- Heavy-duty rack & pinion focusing block with slip clutch and tension adjustment
- Fixed arm stand with incident and transmitted illumination
- Top light 12V/10W Halogen; Bottom light 12V/10W Tungsten
- Supplied standard with 80mm stage plates (frosted glass, black and white)



ST-39Z N9GO

- 45° Inclined Binocular head, rotates 360°, with interpupillary adjustment
- Widefield eyepieces 10X/20mm with diopter adjustment on the left eyetube
- Zoom ratio 1:3; total standard magnification 10X ~ 30X
70mm working distance
- Indication marks at 1X, 1.5X, 2X, 2.5X and 3X
- Heavy-duty rack & pinion focusing block with slip clutch and tension adjustment
- Fixed arm stand with incident and transmitted illumination
- Top light 12V/10W Halogen; Bottom light 12V/10W Tungsten
- Supplied standard with 80mm stage plates (frosted glass, black and white)





SFC 11

Stereo Microscope Series

Precise optical alignment assures a three-dimensional upright image, that is suitable for a wide range of applications from dissecting to examining printed circuit boards. The fixed arm stand with incident and transmitted illumination, makes the **SFC-11** an ideal and safe stereo microscope to be used by technicians and students alike. This model is available in three versions containing different objective turrets.

Model SFC-11A 2LBB

Model SFC-11B 2LBB

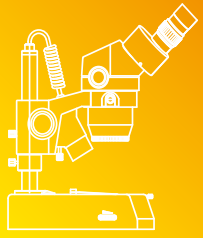
Model SFC-11C 2LBB

- 45° inclined binocular head, rotates 360°, interpupillary adjustment from 55mm to 75mm
- Widefield eyepieces 10X/20mm, with diopter adjustment on the left eyepiece tube
- Objective turret options:
 - Type A 1X/2X
 - Type B 1X/3X
 - Type C 2X/4X
- Working distance: 95mm
- Heavy-duty rack & pinion focusing block with slip clutch and tension adjustment
- Fixed arm stand with incident and transmitted illumination
- Top light 12V/10W Tungsten; Bottom light 12V/10W Tungsten
- Supplied standard with 80mm stage plates (frosted glass, black and white)



SFC-11C 2LBB





SMZ140/143

Stereozoom Microscope Series

Make use of the convenience and versatility of seeing a large part of your sample image at 10X magnification, then zooming continuously to close-up details at 40X...or any point in between. The **SMZ140 Series** offers a high optical performance combined with a special designed incident and transmitted intensity controlled halogen illumination.

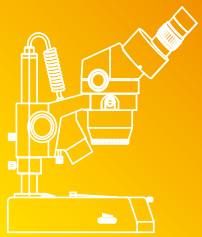
SMZ-140 N2GG SMZ-143 N2GG

- 45° inclined binocular (SMZ-140) or trinocular (SMZ-143) head, rotates 360°
- Beam splitter from left eyepiece tube
- Widefield eyepieces 10X/20mm with diopter adjustment
- 1:4 Zoom ratio, total standard magnification 10X through 40X with click stops at 10X, 20X, 30X and 40X
- 80mm Working distance
- Heavy Duty rack and pinion focusing block with slip clutch
- Pole stand with incident and transmitted Halogen Illumination with separate on/off switch
- Top Light: 12V/15W; Bottom Light 12V/10W with combined intensity control
- Supplied standard with 80mm stage plates (frosted glass, black and white)

BEST SELLER



SMZ-140 N2GG



Accessories

ST39

Eyepieces

Widefield eyepiece WF 5X / 22 mm
 Widefield eyepiece WF 10X / 20 mm
 Widefield eyepiece WF 15X / 13 mm
 Widefield eyepiece WF 20X / 10 mm
 Widefield eyepiece WF 30X / 8 mm

Micrometer eyepieces

Graduated linear line and double cross hair, point: 0.1mm / 10mm

Polarizing accessories

B.301: Polarizing equipment (1 piece rotary)

Darkfield accessories

Darkfield condenser with iris diaphragm
 Jewellery clamp

Spare parts

White stage plate, \varnothing 80mm
 Black stage plate, \varnothing 80mm
 Frosted stage plate, \varnothing 80mm
 Dust cover (size B)
 Eyecups (pair)

Spare bulbs

12V / 10W halogen replacement bulb for incident illumination
 12V / 10W tungsten replacement bulb for transmitted illumination

SFC11

Eyepieces

Widefield eyepiece WF 5X / 22 mm
 Widefield eyepiece WF 10X / 20 mm
 Widefield eyepiece WF 15X / 13 mm
 Widefield eyepiece WF 20X / 10 mm
 Widefield eyepiece WF 30X / 8 mm

Micrometer eyepieces

Graduated linear line and double cross hair, point: 0.1mm / 10mm

Polarizing accessories

B.301: Darkfield attachment with iris diaphragm
 Jewellery clamp

Spare parts

Black/White stage plate, \varnothing 80mm
 Frosted glass stage plate, \varnothing 80mm
 Blue filter
 Dust cover (size B)
 Eyecups (pair)
 Aluminium box

Spare bulbs

12V / 10W tungsten replacement bulb for 2LBB

SMZ 140/143

Stage

1106S: Gliding stage for N2GG stand

Eyepieces

Widefield eyepiece WF 5X / 22 mm
 Widefield eyepiece WF 10X / 20 mm
 Widefield eyepiece WF 15X / 13 mm
 Widefield eyepiece WF 20X / 10 mm
 Widefield eyepiece WF 30X / 8 mm

Micrometer eyepieces

Graduated linear line and plain cross hair, point: 0.1mm / 14mm (widefield 10X/20mm)
 Graduated linear line, point: 0.2mm / 14mm (widefield 10X/20mm)
 360° Protactor, 30° increments (widefield 10X/20mm)
 Graduated linear line and double cross hair, point: 0.1mm / 10mm (widefield 20X/10mm)

Objectives

0.35X objective, WD: 200mm
 0.5X objective, WD: 133mm
 0.63X objective, WD: 110mm
 0.75X objective, WD: 89mm
 1.5X objective, WD: 33mm

Photo and C-mount camera adapters

2X SLR Projection lens
 0.4X C-mount camera adapter for 1/3" chip sensors
 0.5X C-mount camera adapter for 1/2" chip sensors

Polarizing accessories

B.301: Polarizing equipment (1 piece rotary)

Darkfield accessories

Darkfield attachment with iris diaphragm
 Jewellery clamp

Spare parts

Black/White stage plate, \varnothing 80mm
 Frosted glass stage plate, \varnothing 80mm
 Blue filter
 Dust cover (size B)
 Eyecups (pair)
 Aluminium box

Spare bulbs

12V / 15W halogen replacement bulb for incident illumination
 12V / 10W halogen replacement bulb for transmitted illumination



Canada | China | Germany | Spain | USA

Motic®

www.motic.com

Motic Instruments (CANADA)

130 - 4611 Viking Way, Richmond, BC V6V 2K9 Canada
Tel: 1-877-977 4717 Fax: 1-604-303 9043

Motic Deutschland GmbH (GERMANY)

Christian-Kremp-Strasse 11, D-35578 Wetzlar, Germany
Tel: 49-6441-210 010 Fax: 49-6441-210 0122

Motic Incorporation Ltd. (HONG KONG)

Rm 2907-8, Windsor House, 311 Gloucester Road,
Causeway Bay, Hong Kong
Tel: 852-2837 0888 Fax: 852-2882 2792

Motic Spain, S.L. (SPAIN)

Polígono Industrial Les Corts, Camí del Mig, 112
08349 Cabrera de Mar, Barcelona, Spain
Tel: 34-93-756 6286 Fax: 34-93-756 6287

* **CCIS®** is a trademark of Motic Incorporation Ltd.

**Motic Incorporation Limited Copyright © 2002-2010.
All Rights Reserved.**

Design Change :

The manufacturer reserves the right to make changes in instrument design in accordance with scientific and mechanical progress, without notice and without obligation.



Updated: June 2011

