

Leica GPS900 Big ambitions on a budget



- when it has to be **right**

Leica
Geosystems

... in one case



New opportunities ...

Control/Reference Line



Stakeout and measure relative to lines and arcs. Enter offsets and heights. Control/Reference lines can be defined using the map-view. Set checks for quality control. Ideal for buildings, drainage, foundations etc.

Stakeout



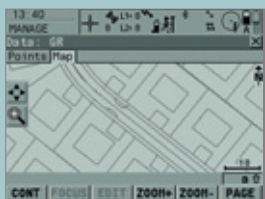
Stakeout points and digital terrain models (DTMs) with the stakeout program. Navigate directly using the map-view or using the large bull's-eye.

Software Specifications



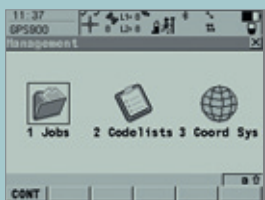
Easy to use

GPS900 is exceptionally easy to use. Control the large graphic display using the touch screen or keyboard. The familiar operating concept provides instant productivity.



Graphical view

Large graphical map-views give easy access to data. Immediately see what has been measured, what has been staked out and what still needs to be done.



Data management

All points, measurements and codes are stored in the internal memory. View, edit, delete and search data. Directly export from GPS900 into various data formats.



Status icons

Easily access status information using the status icons. Current coordinates, RTK status, Bluetooth® Wireless-Technology, battery, memory, etc. can be viewed by tapping on the icons.

Leica GPS900 ...

Best antenna performance

Continue working even in difficult conditions. GPS900 provides the best RTK GPS performance with high accuracy measurements and fast satellite acquisition.

Rugged rover

Built to military specifications the GPS900 RTK rover is incredibly robust. The cable-free all-on-the-pole rover is ideal for construction sites and other demanding workplaces.

One person, one case, one system

Increase productivity. The GPS900 is ideal for one-person stakeout and survey work. Everything that is needed for a days work can be easily transported and setup.



Topographic Survey



Record points with or without code and attribute information. Set criteria and measure points automatically. View the survey in the large, graphical map-view display. Use the Survey program for detail, topo, title surveys etc.

Alignment



Stakeout relative to a 3D alignment using the RoadRunner Lite option. Points can be staked out at any chainage (stationing) and offset. Work with any combination of geometric elements.

Hardware Specifications



ATX900 GPS Antenna

- Total reliability
- Top quality measurements
- Measure amongst trees and obstructions
- Acquisition and initialization within seconds



RX900 Controller

- 1/4 VGA Touch screen
- User-definable keys
- Bluetooth® Wireless-Technology
- 256 MB internal memory



Rugged

- -30° C to +65° C operating temperature
- Up to 100% humidity
- Waterproof to 1 m temporary submersion
- Withstands fall if pole topples over

... easy
GPS in
one case

Leica GPS900 Technical Specifications	
GPS technology	SmartTrack dual frequency 12 L1 + 12 L2
ATX900 GPS Antenna	Built-in groundplane with SmartCheck and Bluetooth® Wireless-Technology
RX900 Controller	1/4 VGA Touch screen Windows CE 5.0 256 MB internal memory Bluetooth® Wireless-Technology RTK range: 2500 m
SmartCheck	Horizontal accuracy: 10 mm +1 ppm, kinematic Vertical accuracy: 20 mm +1 ppm, kinematic Position update rate: 1 Hz standard, option up to 2 Hz
Power supply	Li-Ion 1.9 Ah/7.2 V for GPS900 rover. Ni-MH 8.0 Ah/12 V for GPS900 reference setup. Power RTK rover for about 5 hours.
Temperature	Operation: -30° C to +65° C
ISO9022, MIL-STD-810F	Storage: -40° C to +80° C
Protection against water, dust and sand, IP67 (IEC60529), MIL-STD-810F	Waterproof to 1 m temporary submersion Dust tight
Weight	ATX900: 0.96 kg, RX900: 0.71 kg Entire GPS900 RTK rover: 3.49 kg

Figures quoted are for normal to favorable conditions

- when it has to be **right**

Leica
Geosystems

Whether you want to survey a parcel of land or objects on a construction site, determine measured points on facades or in rooms, gather the coordinates of a bridge or a tunnel – Leica Geosystems' surveying instruments provide the right solution for every application.

They unite reliable results with easy operation and user-friendly applications. They are designed to meet your specific requirements. Modern technology enables you to work fast and productively, thanks to the straightforward and clearly structured range of functions.

When it has to be right.

Illustrations, descriptions and technical specifications are not binding and may change. Printed in Switzerland – Copyright Leica Geosystems AG, Heerbrugg, Switzerland, 2006. 754090en – V.06 – RDV



Total Quality Management – our commitment to total customer satisfaction.

Ask your local Leica Geosystems dealer for more information about your TQM program.

The **Bluetooth®** word mark and logos are owned by Bluetooth SIG, Inc. and any use of such marks by Leica Geosystems AG is under license. Windows CE is a registered trademark of Microsoft Corporation. Other trademarks and trade names are those of their respective owners.



Leica TPS800
Product brochure

Geodesical

Leica Geosystems AG
Heerbrugg, Switzerland
www.leica-geosystems.com

- when it has to be **right**

Leica
Geosystems

