

SOKKIA

CX Series

Compact X-ellence Station

Tradition Meets Innovation

- **RED-tech Technology Reflectorless EDM**
- **LongRange Data Communication*¹**
- **Advanced Angle Measurement System**
- **The Longest*² Battery Life — 36 Hours!**
- **Waterproof, Rugged, and Operator Friendly Design**

*¹ Offered as an option in some areas.

* ² As of September, 2012.



**Exclusive
TSshield
technology built-in**

World's First
integrated support service

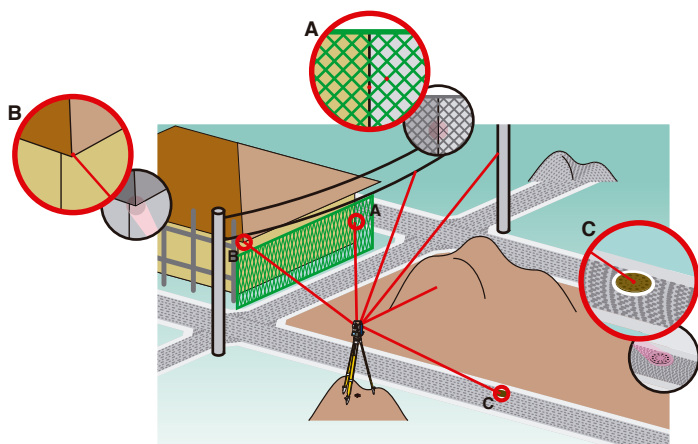


The All New Sokkia CX: Inspired

■RED-tech Technology Reflectorless EDM

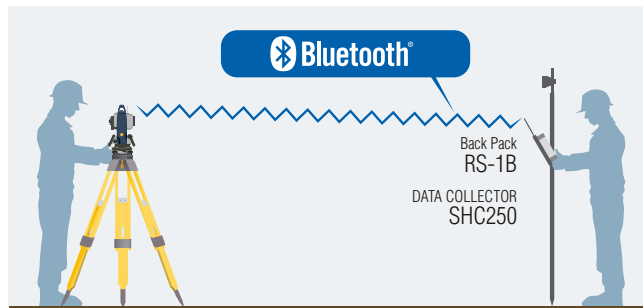


- Fast distance measurement of 0.9s.
- SOKKIA's traditional pinpoint precision in reflectorless distance measurement.
- Reflectorless operation from 30cm to 500m.
- Coaxial EDM beam and laser-pointer provide fast and accurate aiming.
- Ensures accuracy even with reflective sheets.



The ultra-narrow EDM beam can precisely measure walls, corners, manholes on the road surface, even chain-link fences and tree branches.

■LongRange Data Communication*

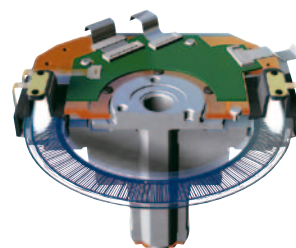


- The CX series of total stations features **Bluetooth®** Class1 wireless technology for reliable data communications.
- All CX data is instantly available at the Bluetooth-equipped controller.

*Offered as an option in some areas.

■Advanced Angle Measurement System

- CX features SOKKIA's original absolute encoders that provide long-term reliability in any job site condition. Dual-axis compensator ensures stable measurements even when setup on uneven terrain.
- Sokkia's traditional motion clamp and tangent screw are employed to ensure stable angle measurement.
- CX-101 and CX-102 feature groundbreaking IACS (Independent Angle Calibration System) technology for extremely reliable angle measurement.



■The Longest*¹ Battery Life — 36 Hours!

- The CX single battery can last up to 36 hours.*²
- Greatly reduces likelihood of low power during any full-days work.
- Eliminates the need for nightly recharging or carrying extra batteries.



*¹ Compare with similar type of products on the market. As of September, 2012.

*² Operating time will vary depending upon environmental conditions and CX activity.

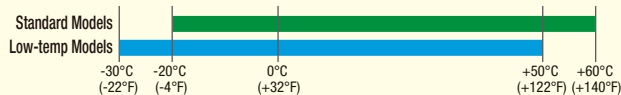
by Tradition, Ready for The Future.

Waterproof, Rugged, and Operator Friendly

- IP66 dustproof / waterproof rating.
- Metal chassis and heavy duty handle add ruggedness.
- Standard usage temperature range -20° to +60°C.
Optional low temperature models can be used as low as -30°.



Operating temperature range



- USB TypeA port for convenient added memory. Use of included USB accessory assures IP66 protection.



- One-touch star key [★] offers instant access to functions.



- Conveniently located “trigger” key lets you take a series of measurements with the push of a button without taking your eye off the telescope.



- Control panel features large 10-key pad with LCD that provides optimum viewing and convenience.*



*Control panel configuration may vary depending on region or model.

- Green / Red telescope guide light enhances work efficiency in a range up to 150m.



- Built-in laser plummet with five brightness levels is equipped for quick instrument setting in all lighting conditions.*

*Offered as an option in some areas.

World's First
integrated support service

TSshield

The industry first! New function to protect your investment

TSshield is a standard feature on all new model of SOKKIA total stations. Its advanced communication system provides new opportunities to secure and maintain your instrument.

*For more detail of TSshield, please refer to the TSshield's leaflet.
This service may not be available in some areas.



Model		CX-101	CX-102	CX-103	CX-105	CX-107
Telescope						
Magnification / Resolving power		30x / 2.5"				
Others		Length: 171mm (6.7in.), Objective aperture: 45mm (1.8in.) (48mm (1.9in.) for EDM), Image: Erect, Field of view: 1°30' (26m/1,000m),Minimum focus: 1.3m (4.3ft.), Reticle illumination: 5 brightness levels				
Angle measurement						
Display resolution		0.5" / 1" (0.0001 / 0.0002gon, 0.002 / 0.005mil)	1" / 5" (0.0002 / 0.001gon, 0.005 / 0.02mil)			
Accuracy (ISO 17123-3:2001)		1"	2"	3"	5"	7"
IACS (Independent Angle Calibration System)		Provided		-		
Dual-axis compensator / Collimation compensation		Dual-axis liquid tilt sensor, working range: ±6' (±111mgon) / Collimation compensation available				
Distance measurement						
Laser output *1		Reflectorless mode: Class 3R / Prism / sheet mode: Class 1				
Measuring range		Reflectorless mode: Class 3R / Prism / sheet mode: Class 1				
(under average conditions*2)		Reflectorless*3	0.3 to 500m (1.0 to 1,640ft.)			
		Reflective sheet*4/*5	RS90N-K: 1.3 to 500m (4.3 to 1,640ft.) RS50N-K: 1.3 to 300m (4.3 to 980ft.), RS10N-K: 1.3 to 100m (4.3 to 320ft.)			
		Mini prisms	CP01: 1.3 to 2,500m (8,200ft.), OR1PA: 1.3 to 500m (1,640ft.)			
		One AP prism	1.3 to 4,000m (4.3 to 13,120ft.) / Under good conditions*6: 5,000m (16,400ft.)			
Three AP prisms		to 5,000m (16,400ft.) / Under good conditions*6: to 6,000m (19,680ft.)				
Display resolution		Fine/Rapid: 0.001m / 0.01ft. / 1/8in. Tracking: 0.01m / 0.1ft. / 1/2in.				
Accuracy*2 (ISO 17123-4:2001) (D=measuring distance in mm)		Reflectorless*3	(3 + 2ppm x D) mm*7			
		Reflective sheet*4	(3 + 2ppm x D) mm			
		AP/CP prism	(2 + 2ppm x D) mm			
Measuring time*8		Fine: 0.9s (initial 1.7s), Rapid: 0.7s (initial 1.4s), Tracking: 0.3s (initial 1.4s)				
Interface and Data management						
Display / Keyboard		Graphic LCD, 192 x 80 dots, backlight, contrast adjustment / Alphanumeric keyboard / 25 keys with backlight				
Control panel location*9		On both faces				
Trigger key		On right instrument support				
Data storage		Internal memory	Approx. 10,000 points			
		Plug-in memory device	USB flash memory (max. 8GB)			
Interface		Serial RS-232C, USB2.0 (Type A, for USB flash memory)				
Bluetooth modem (option)*10		Bluetooth Class 1, Ver.2.1+EDR, Operating range: up to 300m (980ft.)*11				
General						
Laser-pointer*12		Coaxial red laser using EDM beam				
Guide light*12		Green LED (524nm) and Red LED (626nm), Operating range: 1.3 to 150m (4.3 to 490ft.)*2				
Levels		Graphic	6' (Inner Circle)			
		Circular level	10' / 2mm			
Optical plummet		Magnification: 3x, Minimum focus: 0.3m (11.8in.) from tribrach bottom				
Laser plummet (option)		Red laser diode (635nm±10nm), Beam accuracy: ≤1.0mm@1.3m, Class 2 laser product				
Dust and water protection		IP66 (IEC 60529:2001)				
Operating temperature*13		-20 to +60°C (-4 to +140°F)				
Size with handle*9		Control panel on both faces: W191 x D181 x H348mm (W7.5 x D7.1 x H13.7in.) Control panel on one face: W191 x D174 x H348mm (W7.5 x D6.9 x H13.7in.)				
Weight with battery & tribrach		Approx. 5.6kg (12.3 lb.)				
Power supply						
Battery		BDC70 detachable battery	Li-ion rechargeable battery			
Operating time (20°C)		BDC70	Approx. 36 hours (single distance measurement every 30 seconds)			
		External battery*14 (option)	BDC60: approx. 44 hours, BDC61: approx. 89 hours (single distance measurement every 30 seconds)			

*1 IEC60825-1:Ed.2.0:2007 / FDA CDRH 21 CFR Part 1040.10 and 11 *2 Average conditions: Slight haze, visibility about 20km (12 miles), sunny periods, weak scintillation. *3 With Kodak Gray Card White Side (90% reflective). When brightness on measured surface is 30,000 lx. or less. Reflectorless range/accuracy may vary according to measuring objects, observation situations and environmental conditions. *4 When the measuring beam's incidence angle is within 30° in relation to the reflective sheet target. *5 Measuring range in temperatures of -30 to -20°C (-22 to -4°F) with Low Temperature models and 50 to 60°C (122 to 140°F): RS90N-K: 1.3 to 300m (4.3 to 980ft.), RS50N-K: 1.3 to 180m (4.3 to 590ft.), RS10N-K: 1.3 to 60m (4.3 to 190ft.) *6 Good conditions: No haze, visibility about 40km (25 miles), overcast, no scintillation. *7 Measuring range: 0.3 to 200m *8 Typical, under good conditions. Reflectorless measurement time may vary according to measuring objects, observation situations and environmental conditions. *9 Control panel location may vary depending on region or model. *10 Usage approval of Bluetooth wireless technology varies according to country. Please consult your local office or representative in advance. *11 No obstacles, few vehicles or sources of radio emissions/interference in the near vicinity of the instrument, no rain. *12 The laser-pointer and the guide light do not work simultaneously. *13 Low Temperature models: -30 to 50 °C (-22 to 122°F) are available on built-to-order basis. *14 For CX-101, CX-102 and Low temperature models.

Standard Accessories

- CX main unit ●Battery (BDC70) ●Battery charger (CDC68) ●Power Cable ●Lens cap ●Lens hood ●Tool pouch
- Screwdriver ●Lens brush ●Adjusting pin x2 ●Cleaning cloth ●Operation manual ●USB memory ●Laser caution sign-board
- Carrying case ●Carrying strap



TOPCON CORPORATION

75-1 Hasunuma-cho, Itabashi-ku, Tokyo 174-8580, Japan
Phone: (+81)3-3558-2993 Fax: (+81)3-3960-4214
www.topcon.co.jp

-Bluetooth® word mark and logos are registered trademarks owned by Bluetooth SIG, Inc. and any use of such marks by Topcon is under license. Other trademarks and trade names are those of their respective owners.
-Designs and specifications are subject to change without notice.
-Product colors in this brochure may vary slightly from those of the actual products owing to limitations of the printing process.

Your local Authorized Dealer is:

Specifications subject to change without notice

©2012 Topcon Corporation All rights reserved. P-138-3 GE