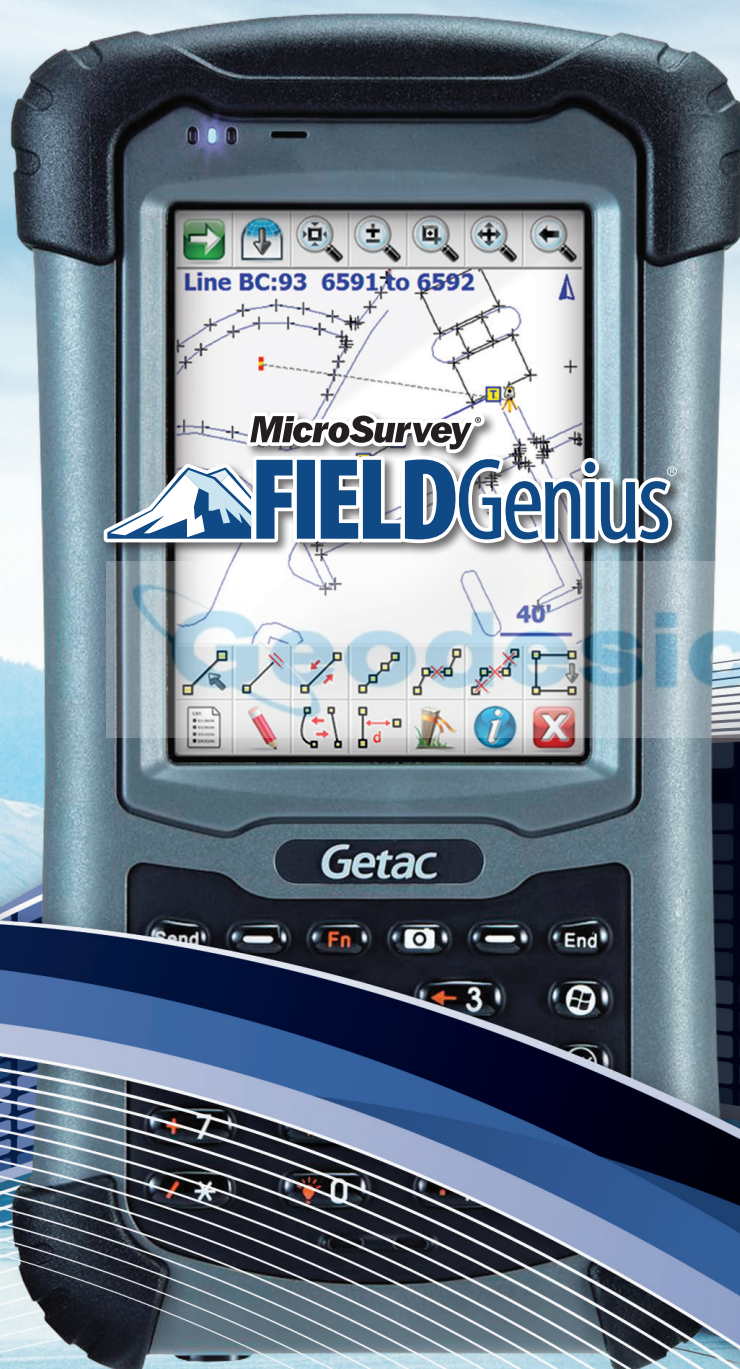


# GeoMax FieldGenius

## Linework: the FieldGenius Way





# GeoMax FieldGenius

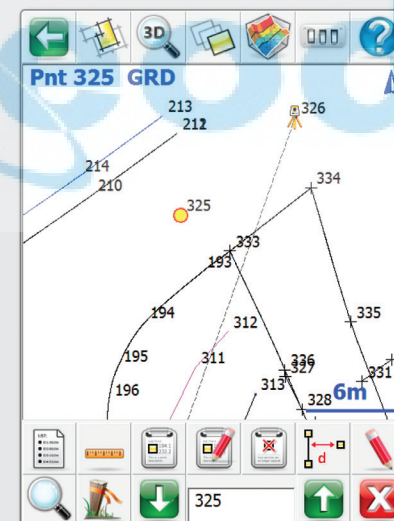
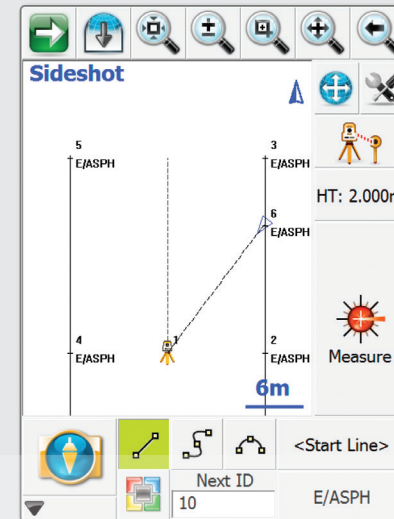
## Linework: the FieldGenius Way

FieldGenius has evolved into the most powerful and productive data collection software on the market

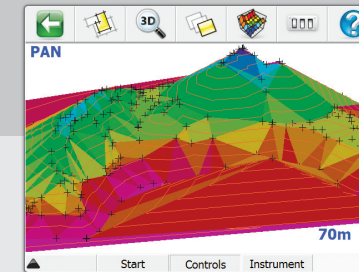
- Code-free linework: Linework is created automatically without entering codes and is instantly displayed, eliminating the need for a separate sketch. No need to connect the dots back at the office.
- Advanced display with live graphics and intuitive interface. Logical icons, customizable toolbars, smart objects and easy to use GPS and total station controls. Standard or high-definition devices!
- Productivity tasks: Customize your data collector by assigning commands to your keypad keys.
- Calculating tools: Access the built-in RPN calculator from any edit field and easily use surveying calculations.
- Plus advanced roading, surfacing, slope staking, smart points, DXF & LandXML import/export and full robotic and GPS support. FieldGenius is the choice of organizations that value productivity.

FieldGenius Linework is easier than any other data collection software

- You can connect points that have different descriptions.
- Linework can consist of straight segments, arcs and splines.
- Linework is ALL in 3D including arcs and splines.
- You can have more than one line with the same description; FieldGenius is smart enough to know which line to work on.
- Multiple lines can connect to the same point.
- Missing segments can be drawn using the pencil tool any time you need to add more info.
- A bad line can be removed instantly by tapping it and selecting "Delete Segment".

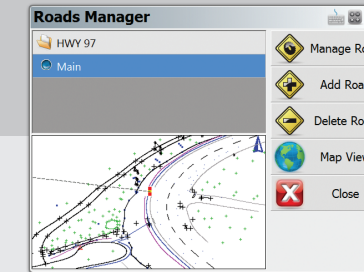


## Work More Efficiently in the Field



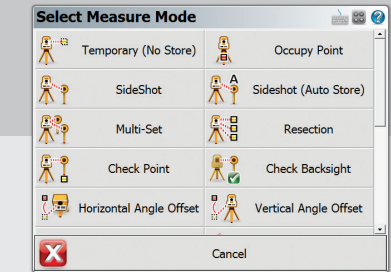
Digital Terrain Modeling, Volumes and Contouring

FieldGenius has the ability to create and utilize DTM surfaces from existing survey data or create a DTM in real time as the data is collected. The TIN and contours will automatically update as each new shot is taken.



Powerful Roding

FieldGenius roading allows you to manually input or import your alignment data including centerline, vertical and template data. Stake your points along your alignment with confidence.



Instrument Control at your Fingertips

Total Station and GPS functions are available on a common and easy to use instrument toolbar. Access measure modes with the click of a button.

### Own The Workflow

Painless data transfer: seamlessly connect your PC with FieldGenius to show you all the products on your device. With the RW5 format, you can easily transfer your raw files into any modern surveying software.

### A Winning Combination

FieldGenius works flawlessly with GeoMax total stations and GNSS receivers, and makes great use of high-definition displays on Getac data collectors with its high-resolution interface and large/clear icons.



## MODULARITY

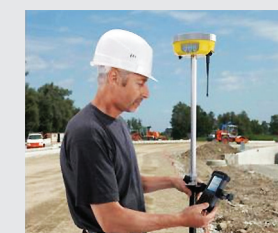
### Total Station

Full support of total stations.



### GNSS/GPS

Support for RTK GPS receivers.



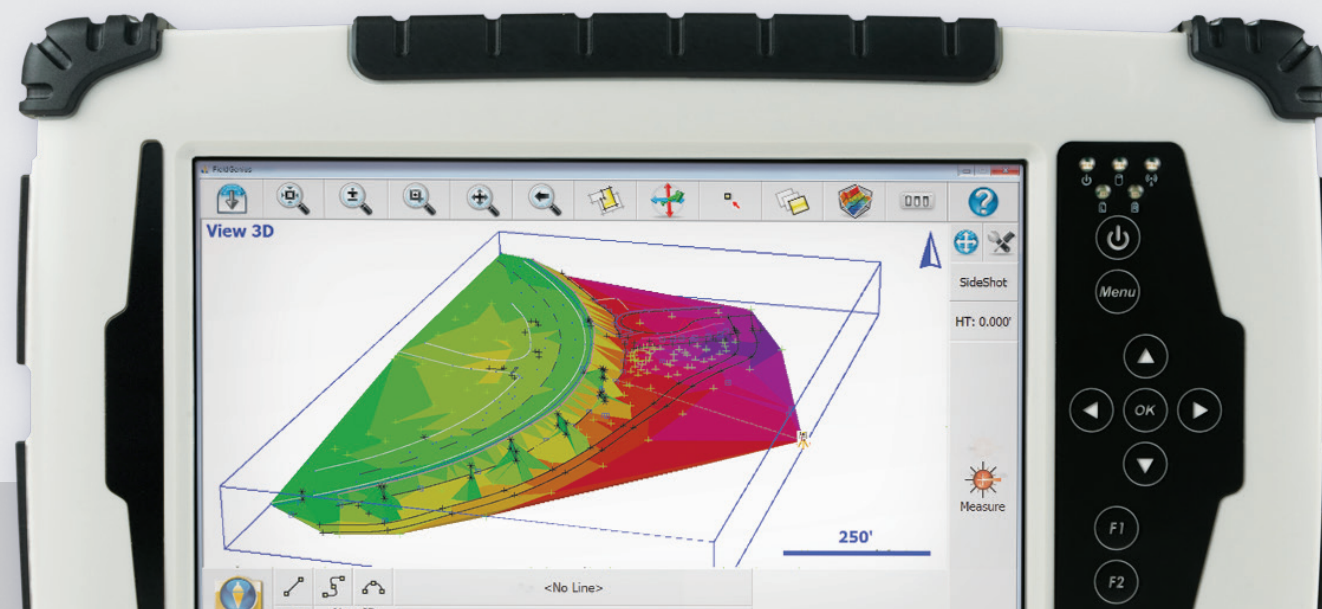
### Advanced

Roding, surfacing, slope staking functions.



### Robotic

Functionality for robotic total stations.



# GeoMax FieldGenius

## Linework: the FieldGenius Way

### FieldGenius Feature List by Module

Four modules are available plug into FieldGenius: Total Station, Advanced, Robotics, and GNSS/GPS. The chart below shows the core functionality of FieldGenius, along with the functionality of the major modules.

#### FieldGenius Standard Features

- Modern Windows interface with smart menus, smart objects and incredible graphics
- The drawing is primary to the interface
- Real-time drawing generation with automatic linework
- Built in COGO – intersections, inverting and traversing
- Enter, edit and stake points
- One button project manager
- DXF import for background project view
- DXF coordination of lines, arcs, polylines, points
- FBK export for easy Autodesk LDD Import of raw data, points and linework
- ASCII import/export
- Automatic traversing (1 set, 2 set, n sets)
- Traverse closure calculations
- Raw data editing
- Traverse re-coordination in the collector
- Closure calculations
- Angular adjustment, compass balance
- Extensive total station support
- Support for multiple hardware platforms
- One button file transfer to desktop systems
- 3D data view with dynamic zoom, pan and scroll
- Support for built-in GPS on PS236

#### Advanced Features

(Requires Advanced Module)

- LandXML project explorer
- Surface modeling in real-time
- LandXML alignment, cross section and zone staking
- Fixed area calculations
- Volume calculations
- Stake to DTM
- Contouring in real-time
- GIS attribute collection
- 3D alignment, cross section and template view
- Shaded, rendered view of surface data

#### Robotics Features

(Requires Robotics Module)

- Automatic “Turn to Point” features
- Navigate to stake point
- Advanced robotic control tools
- Wireless radio and bluetooth support
- Automatic prism tracking
- Assign robotic functions to keypad keys
- Real-time tracking icon in map view
- Support for GeoMax robotic total stations

#### RTK GPS Features

(Requires GPS Module)

- Full RTK GPS support
- Profiles for multiple receivers – makes setup easy
- Full RTK support with tracking icon in map view
- Automatic geodetic transformations from WGS84 to local coordinate systems
- Dynamic GPS toolbar – HDOP, VDOP, PDOP and satellites
- Heads-up display shows lat/long or grid coordinates
- Local transformation (Helmert)
- Horizontal/vertical adjustment
- Statistical analysis with residuals and RMS
- Works with GeoMax RTK GPS receivers

#### Free Trial Version

Try a free demo version of FieldGenius and find out for yourself why FieldGenius is the most powerful survey data collection software in the world.

Copyright GeoMax AG